



Euromebel
kitchen

TABLE OF
CONTENTS

Our range of contemporary kitchens accomplishes fine detailing and craftsmanship while providing functional creative design solutions. A careful endeavor to seamlessly blend design with architecture inspires every project. Custom sizes and personal tailored service come as standard.

- KITCHEN models
- BLVD 4-13
- ONE 14-23
- BLINK 24-33
- ZERO 34-41

#BLVD

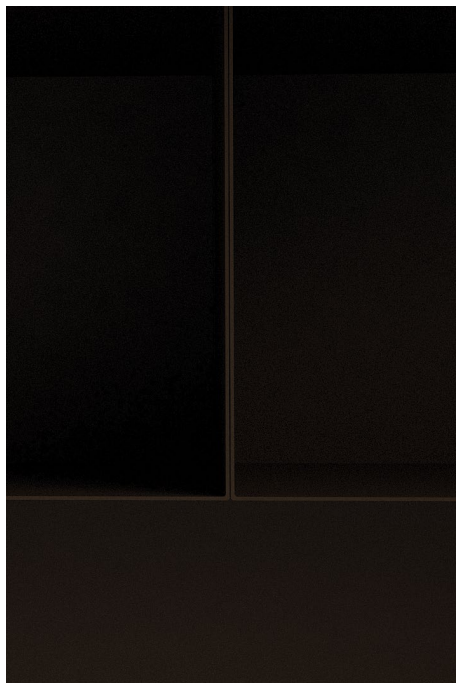
BLVD is an open space kitchen built with large geometric volumes, distinguished by the absence of handles, which interact with architecture. The combination of materials is characterised with versatility and precision. BLVD embodies an extrovert attitude which makes it suitable for social living.





#BLVD
Design by
Euromebel



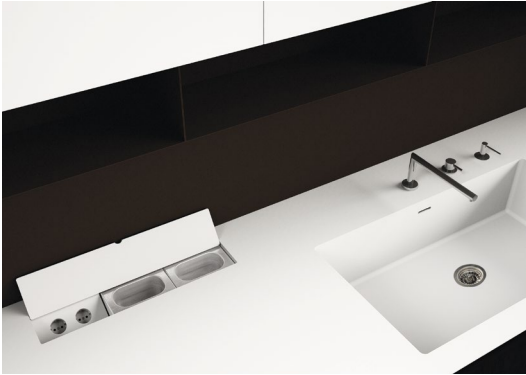


#BLVD
Design by
Euromebel





Wall units feature Aventos by Blum® mechanisms, powder coated handle and LED lighting



DuPont Corian® worktop with tailor-made accessories



Dupont Corian® worktop / Matching satin finish paint



Flexible drawer system with integrated LED lighting



Deep drawer system with integrated LED lighting



Tiger® powder coated metalwork



Smoked oak veneered 25 mm thick fronts

#BLVD features

The technical features and accessories offer flexible solutions to compliment every kitchen function. Spacy and functional on the inside BLVD offers a contemporary look at a classic kitchen features.

#BLVD materials

The choice of materials creates a time lasting combination between the naturalness of hand-picked veneers and the precision of metal work. DuPont Corian® worktop brings purity and cleanliness.

#ONE

One is the focal point in a modern house concept where two functional areas meet and interact to create a unique living space. With a dining table attached to the kitchen island through an open shelves unit and a composition of tall units containing a great variety of technical and functional features, One is a self-sufficient solution.





#ONE
Design by
Euromebel





#ONE
Design by
Euromebel





Pocket doors mechanism hides a niche for freestanding electric appliances.



Extractable stainless steel worktop



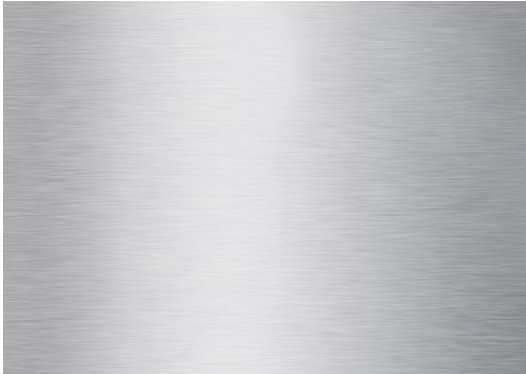
Dupont Corian® worktop / Matching satin finish paint



DuPont Corian® custom design integrated sink



Chromed edge handle



Stainless steel extractable worktop



Hand-picked American walnut veneer.

#ONE features

'Handless ' fronts underline the geometrical rigor. Pocket doors hiding extractable worktop in stainless steel keep the lines clean. Integrated DuPont Corian® sink adds aesthetics to the function. Precise metal work is essential to the sharp look of the whole composition.

#ONE materials

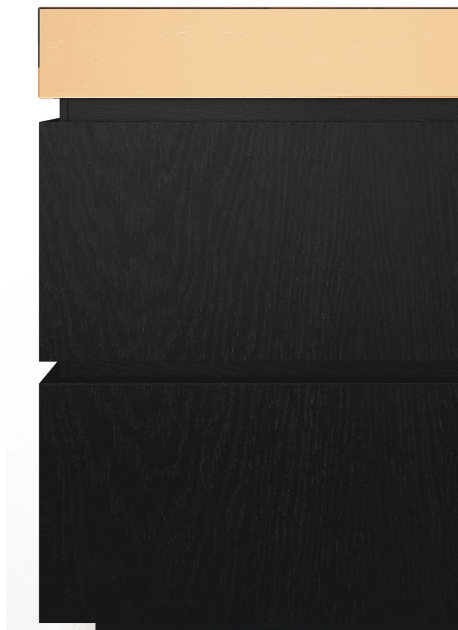
The purity of the white surfaces in satin finish paint and white DuPont Corian® contrasts with the warm and natural look of the walnut veneer.

#BLINK

Blink is an interpenetration of fashion in kitchen design. The basic geometry, emphasised by the lack of wall units, draws the attention to the details creating a visual and tactile challenge for the senses. The mix of patterns and materials makes its flashy look almost extravagant.







#BLINK
Design by
Euromebel



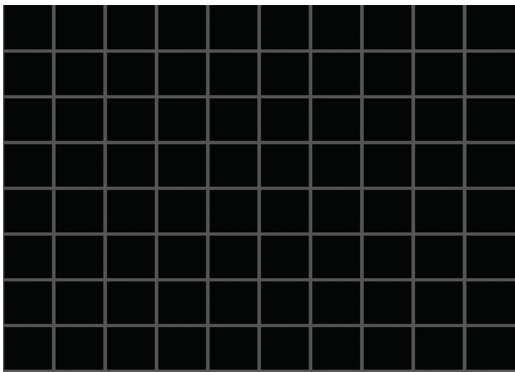




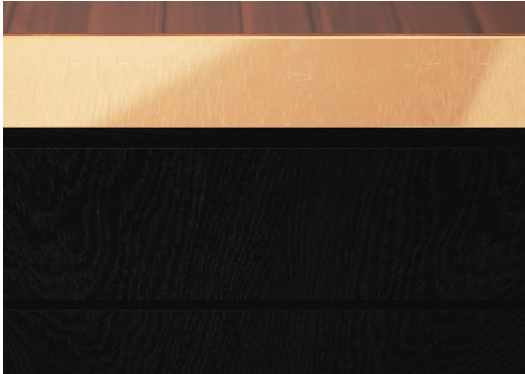
12 mm thick HPL compact sliding down backsplash panel



Copper interior of semi-high and backsplash units



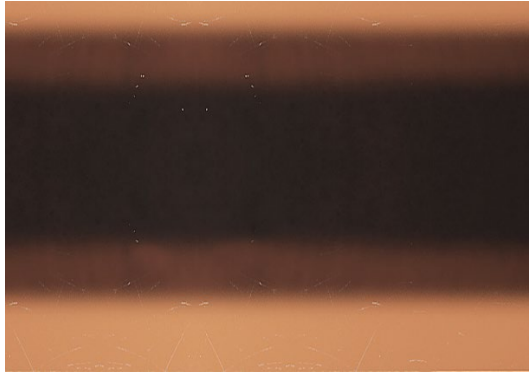
12 mm HPL compact fronts with engraved pattern



60mm thick polished copper worktop



12 mm tthick black core HPL worktop with undermounted sink



Polished copper worktop



Deep black stained maple veneered fronts

#BLINK features

Copper covers the countertop and is also used for the interior of the semi-high units. The use of 12 mm thick HPL adds to the sharpness of the lines. Sliding down backsplash panels hide plenty of storage space.

#BLINK materials

The choice of materials is determined by the idea of mixing and matching different patterns. Maple veneered fronts in deep black stain counterweight the hi-tech look of the engraved HPL surfaces.

#ZERO

Zero submits to the virtues of minimalism. It is not a piece of furniture but an architectural element which adds more space and light to the living space environment. Zero is an answer to the ultimate design challenge –it is a hidden kitchen.









DuPont Corian® custom design integrated sink with extractable faucet



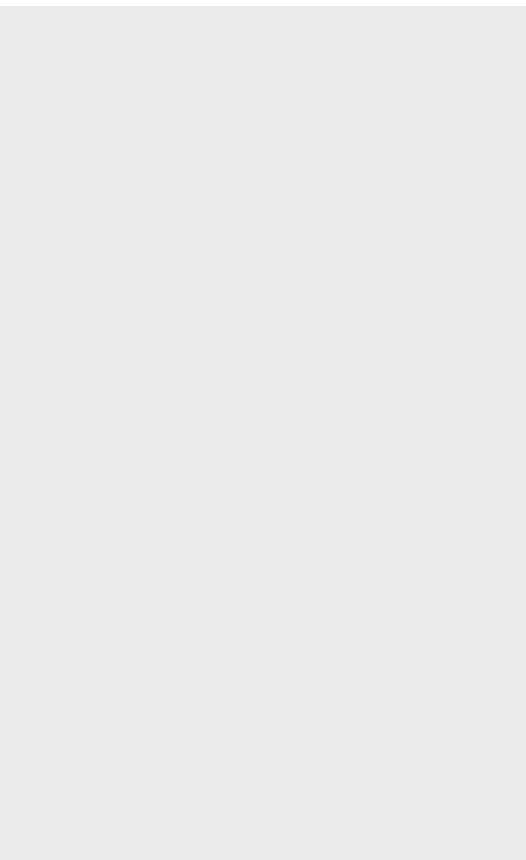
Sliding backwards panel with custom movement



Legrabox by Blum® stainless steel drawer mechanisms with tip-on movement



Built-in electrical appliances disappear behind a door



DuPont Corian® worktop



High gloss lacquered fronts

#ZERO features

High-gloss lacquered fronts enhance the “disappearing” effect. The sunken down DuPont Corian® worktop features a custom integrated sink with extractable faucet. Front doors differ in thickness according to their function. Electric appliances are integrated in open shelf tall unit behind a door.

#ZERO materials

Materials and colors are matching the interior. They play a neutral role.

CREDITS

GRAPHIC DESIGN AND LAYOUT
Applauz, Advertising Agency
T: +359 887 519 262
E: office@applauz.eu
www.applauz.eu

